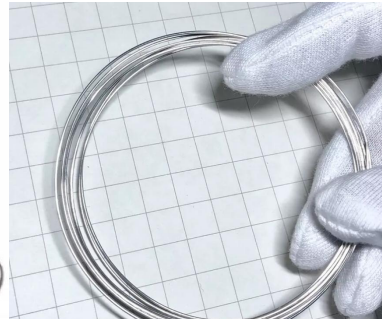
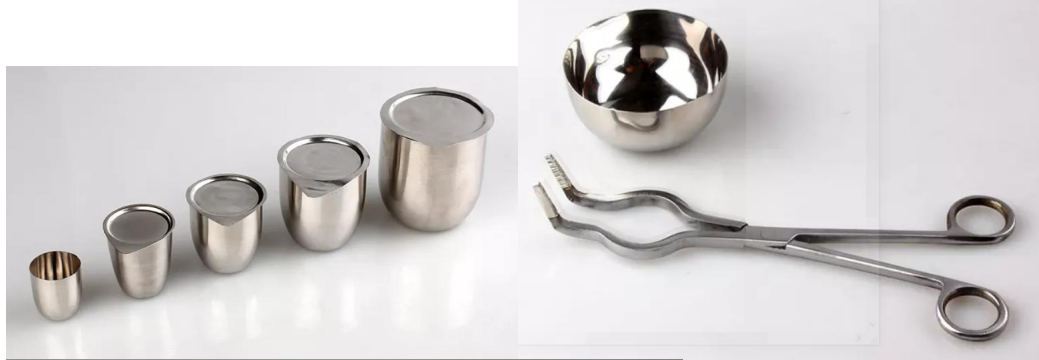


# Pure Platinum Crucibles, Wires, Tongs and Dishes:

Photos for slideshow:



**CONTENTS:**

Our platinum products have been widely used by laboratories across the country. The purity you shall receive will always be above 99.95%. Our wide range of diameters, lengths, weights and capacities along with superior sales support has allowed the customers to decide between the various options available.

Buyers can choose between the countless options available as under:

**Platinum Crucible:**

Product Name	Capacity	Upper Diameter	Height	Thickness	Weight
	(ml)	(mm)	(mm)	(mm)	(g)
Pt crucible with lid Pt purity ≥ 99.95%	10	28	28	0.26	11
	15	32	32	0.26	15
	20	35	35	0.27	20
	25	37	37	0.27	25
	30	39	40	0.29	30
	35	40	40	0.29	35
	40	42	42	0.29	40
	50	44	44	0.31	50
	60	49	49	0.33	60
	80	54	54	0.35	70
	100	60	60	0.37	85
	150	70	70	0.38	156
	200	74	74	0.38	175
	250	78	78	0.39	198
	300	86	83	0.4	240

**Item: Platinum dish**

Product Name	Capacity	Diameter	Depth	Weight dish	Weight lid
	(cc)	(mm)	(mm)	(g)	(g)
Pt dish Pt purity ≥ 99.95%	20	41	20	6	6
	25	42	23	8	10
	35	49	25	12	13
	40	51	26	15	14
	50	53	29	17	15
	60	58	30	20	19
	75	65	30	25	22
	100	70	33	33	25
	125	74	34	42	28
	150	77	41	50	33
	175	84	40	55	41
	200	90	43	67	44
	250	94	42	80	51
	300	110	45	94	55
	400	115	48	133	58
500	124	50	170	61	
750	124	75	270	61	

c

**Platinum Tongs:**

**Item: Crucible Tong**

mode	Crucible Series		
	stainless steel crucible	stainless steel crucible tongs(cm)	standard crucible tongs weight(gram)
1	6"	15	4
2	8"	20	5
3	10"	26	6
4	12"	30	7
5	14"	36	8
6	16"	41	9
7	18"	46	10
8	20"	51	11
9	22"	56	12
10	24"	62	14